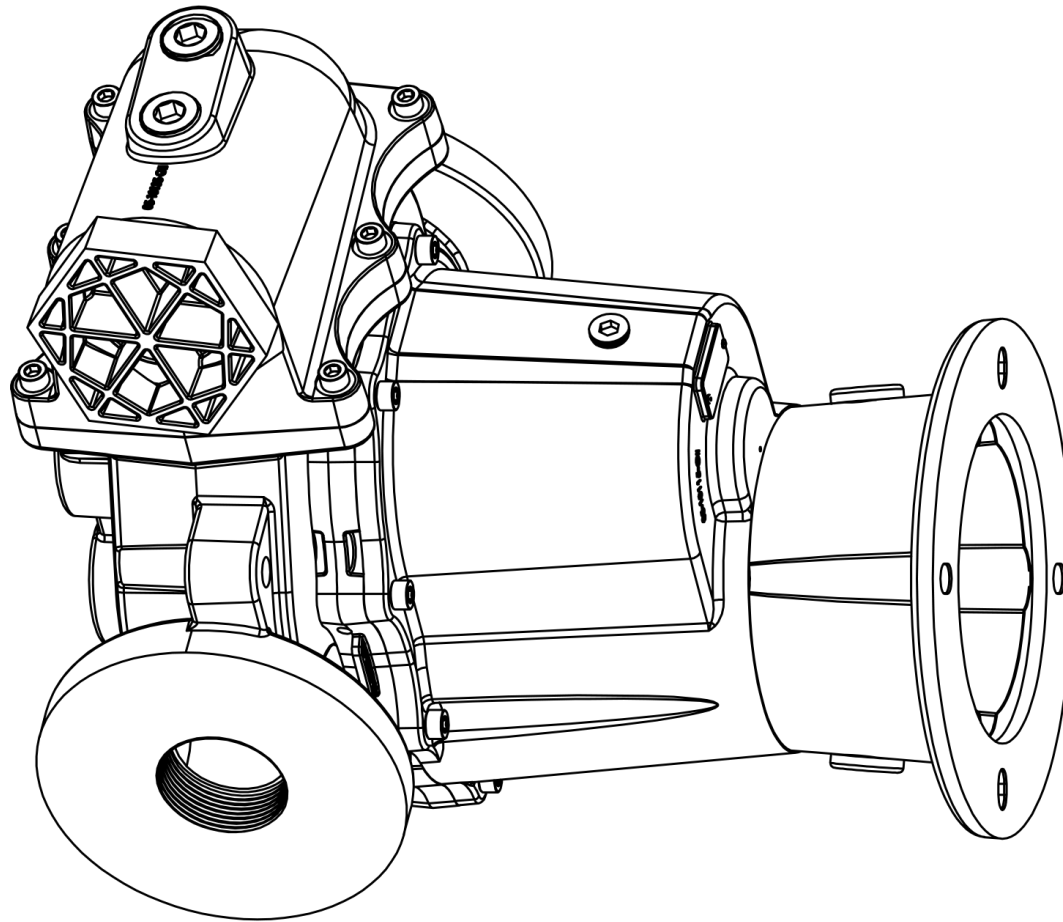


# FTS150/FTS200

## Pump Information & Data Package



Revision 2017100201

© 2020 Liquiflo Equipment Company



Liquiflo Equipment Company  
**Liquiflo FTS Fluid Transfer Pumps**  
443 North Avenue  
Garwood, NJ 07027, USA  
phone 1 (908) 518-0777  
fax 1 (908) 518-1847  
[www.Liquiflo.com/FTS](http://www.Liquiflo.com/FTS)

# Product Information

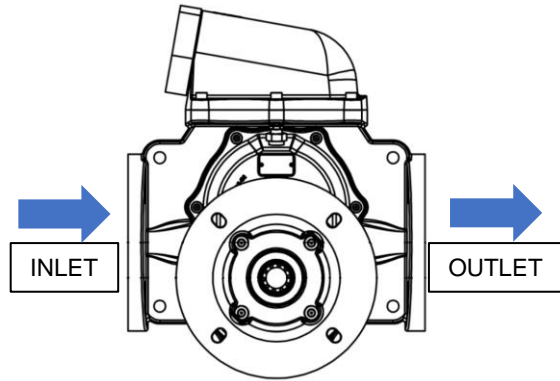
Model number:	FTS150	FTS200
Housing material:	Aluminum	Aluminum
Seal material:	Buna/Nitrile	Buna/Nitrile
Shaft material:	Steel	Steel
Weight:	34 lbs	38 lbs
Length, overall:	12.71 in	13.95 in
Width, overall:	10.50 in	10.50 in
Height, overall:	13.31 in	13.18 in

## FTS150 and FTS200

Max. speed	1400 RPM
Recommended inlet filtration:	300 micron
Max. differential pressure:	150 PSID
Max. working pressure:	180 PSIG
Max. viscosity:	7000 SSU
Min. operating temperature:	-20°F
Max. operating temperature:	250°F

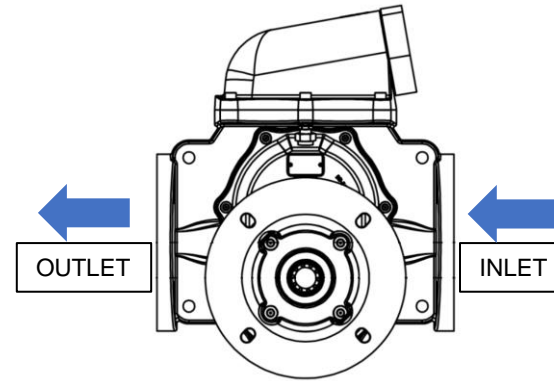
# Direction of Flow – Forward Operation

**Forward Direction**  
**Standard applications**  
(Electric Motors – Shaft turns CW)

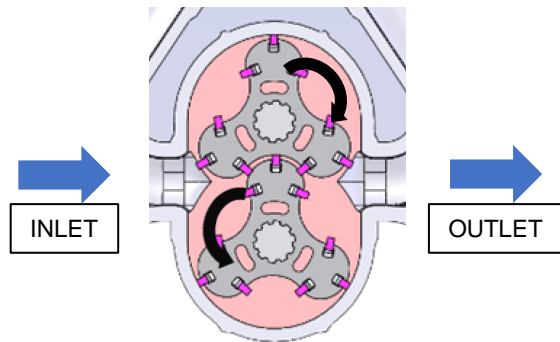


**Exterior View - Front of Pump**

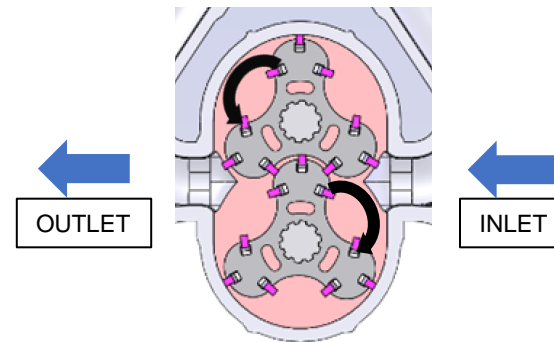
**Forward Direction**  
**Non-standard applications**  
(Diesel/gas engines – Shaft turns CCW)



**Exterior View - Front of Pump**

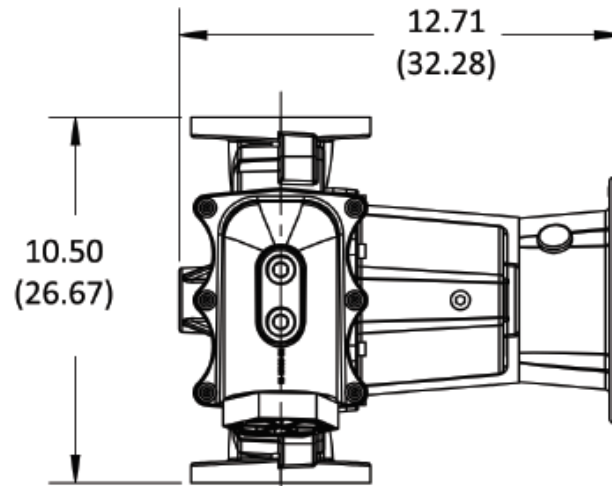
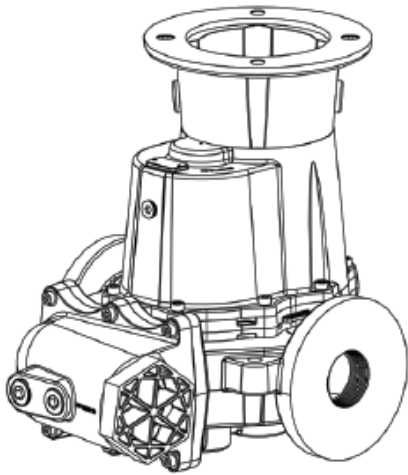


**Interior View – Front of Pump**  
Top impeller turns clockwise



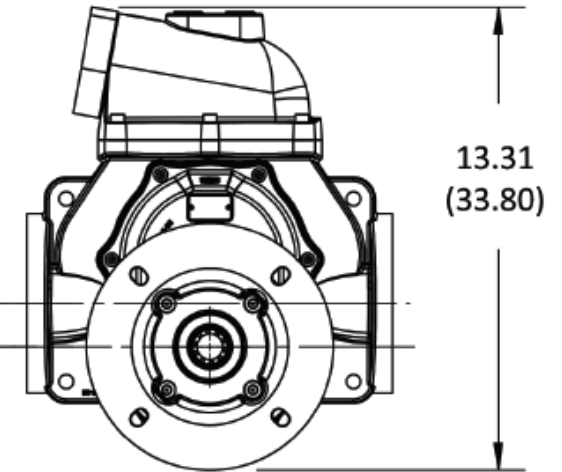
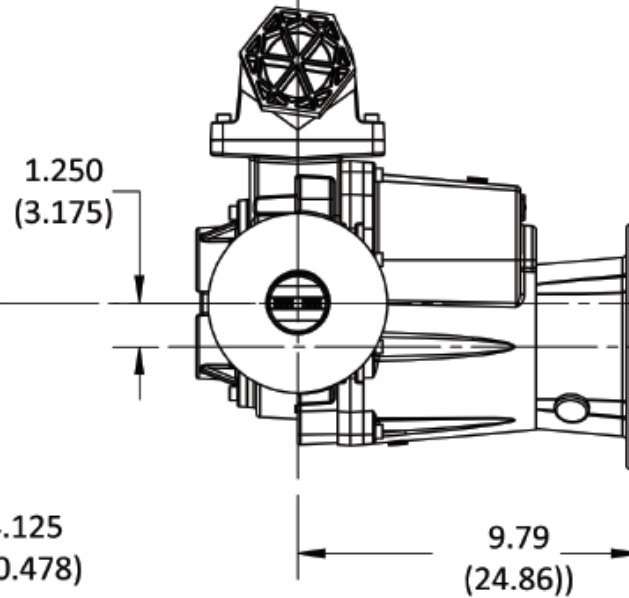
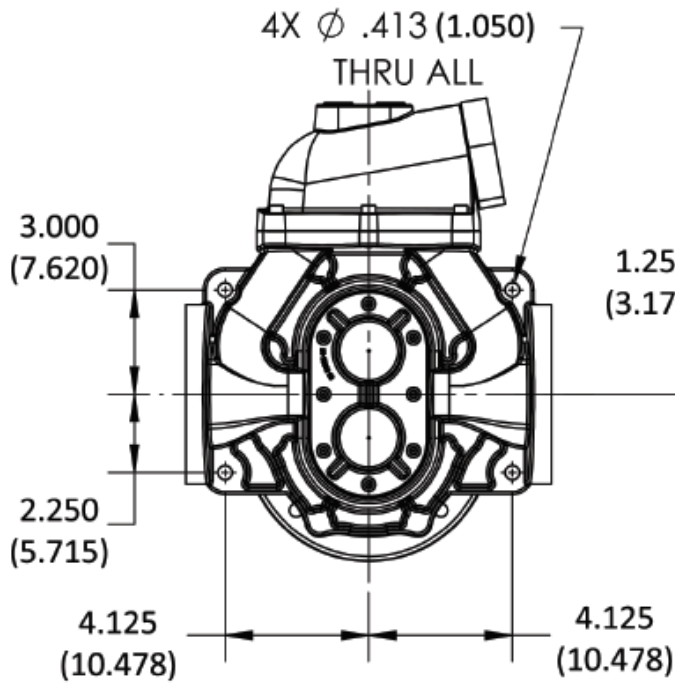
**Interior View – Front of Pump**  
Top impeller turns counter-clockwise

# Product Dimensions: FTS150



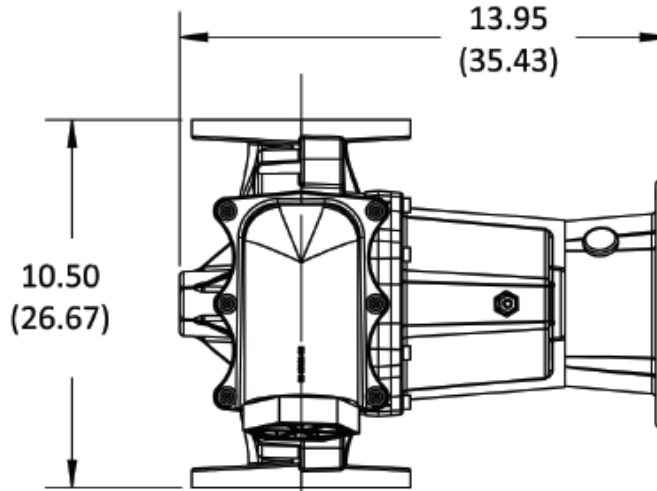
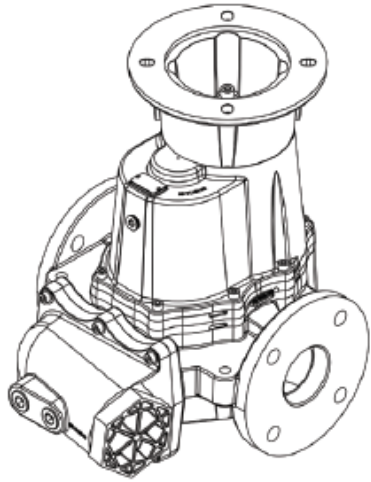
**INLET AND OUTLET CONNECTIONS**  
 The inlet and outlet of this pump end can accommodate 1.5" FNPT or 4-bolt flange connections.

**WEIGHT** - 34 lbs. (15.4 KG)



**in. (cm)**

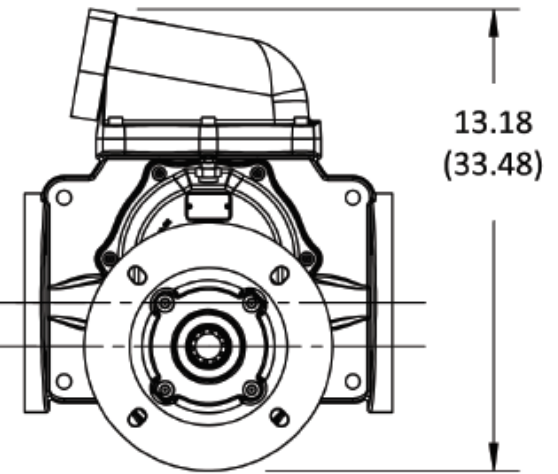
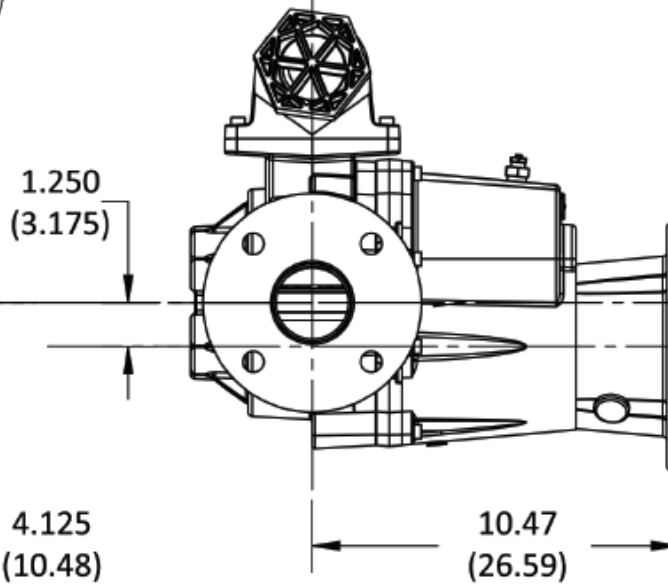
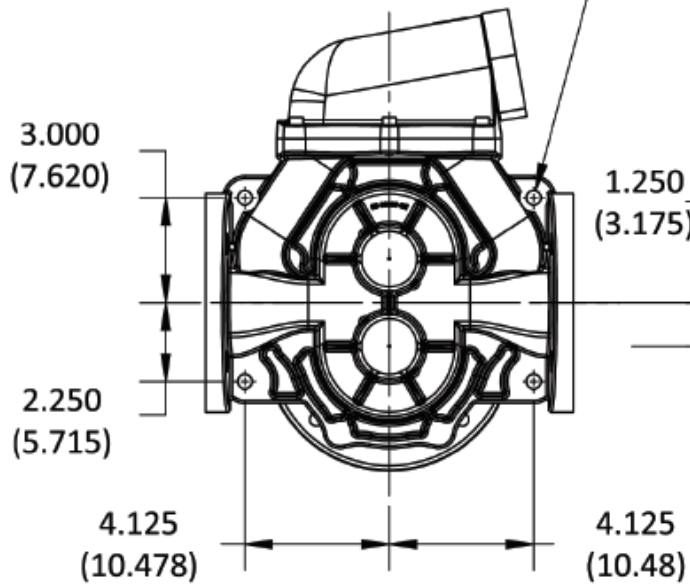
# Product Dimensions: FTS200



**INLET AND OUTLET CONNECTIONS**  
 The inlet and outlet of this pump end can accommodate 2.0" FNPT or 4-bolt flange connections.

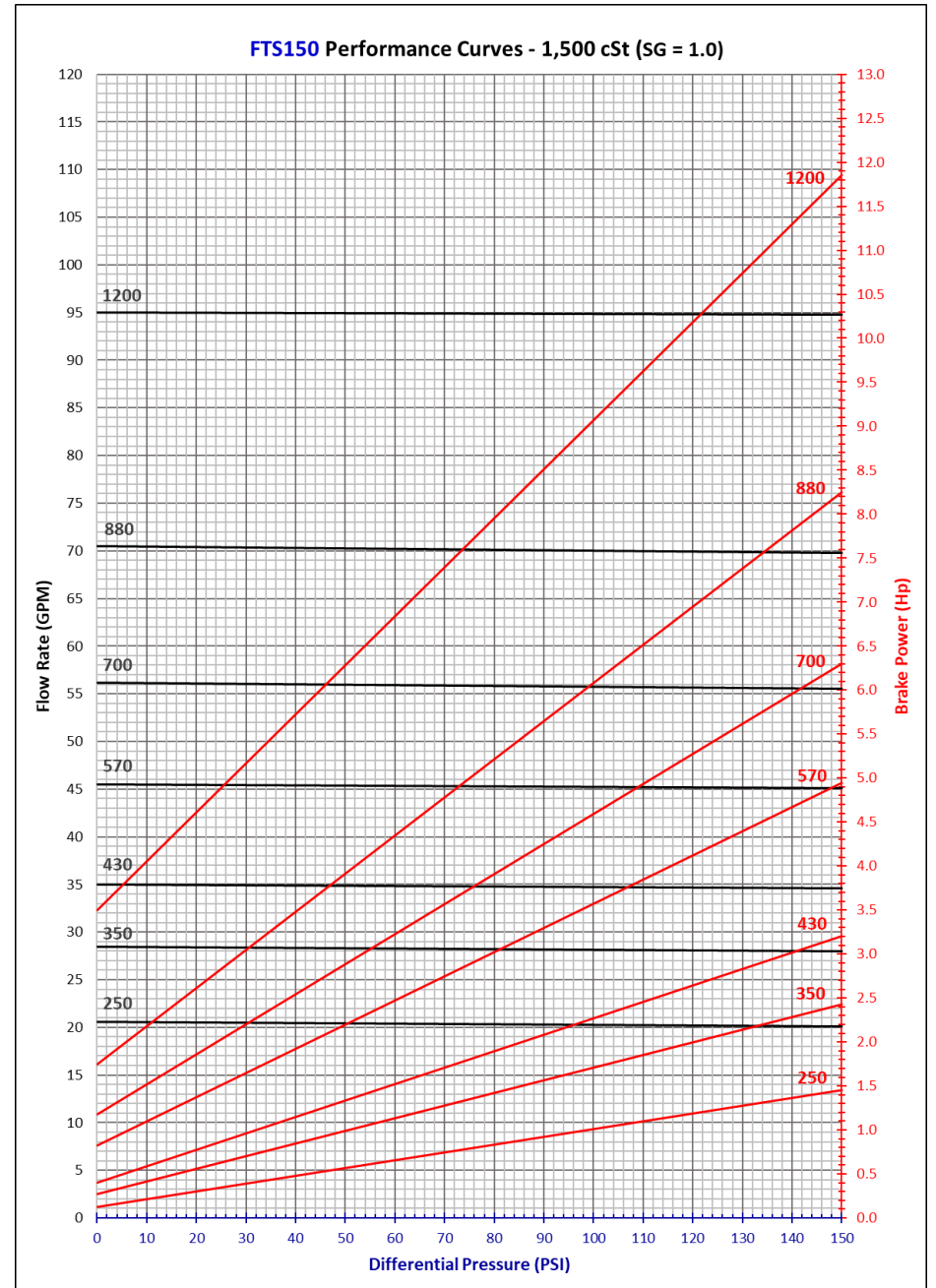
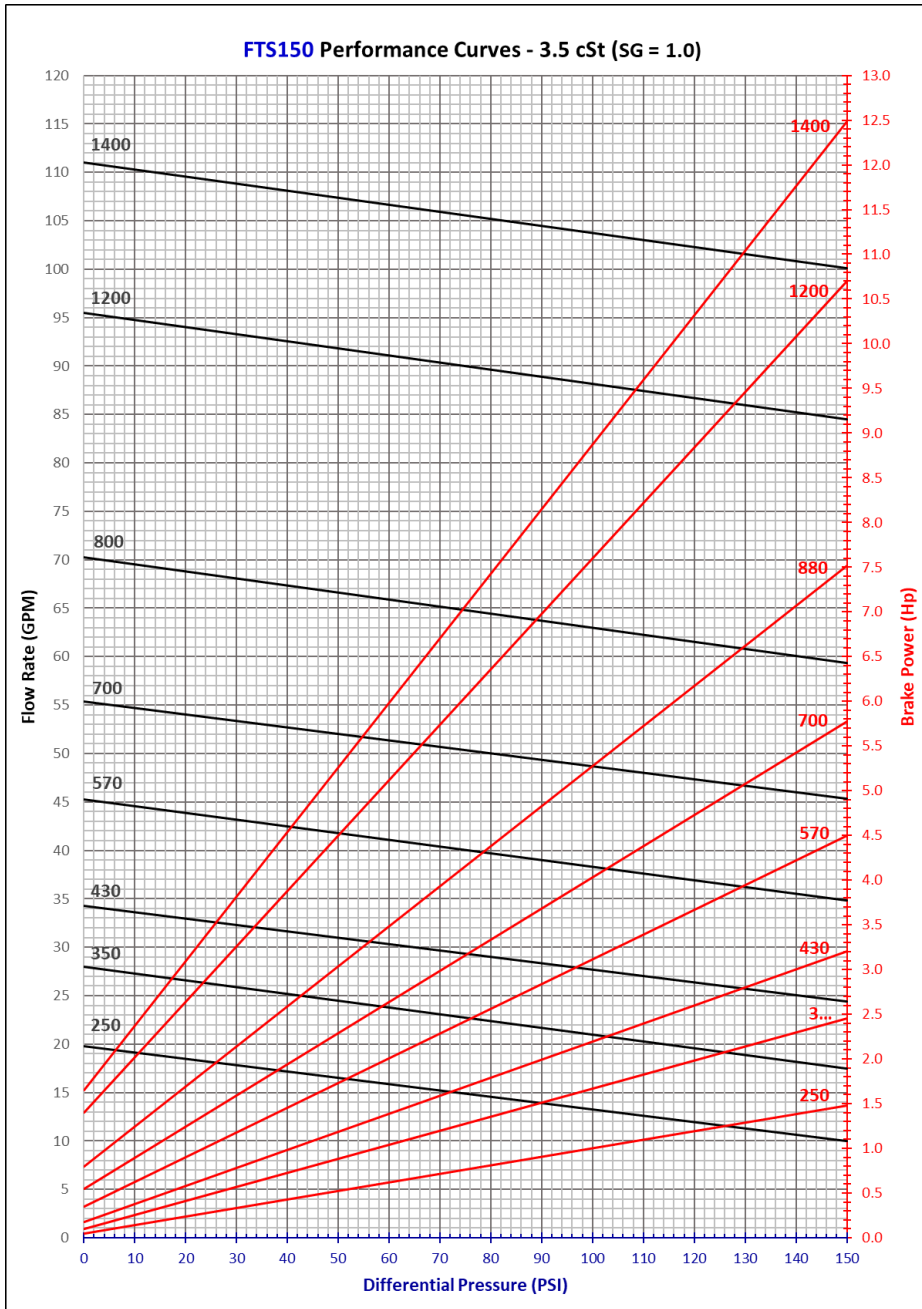
**WEIGHT - 38 lbs. (17.2 KG)**

4X  $\varnothing$  .413 (1.050)  
 THRU ALL



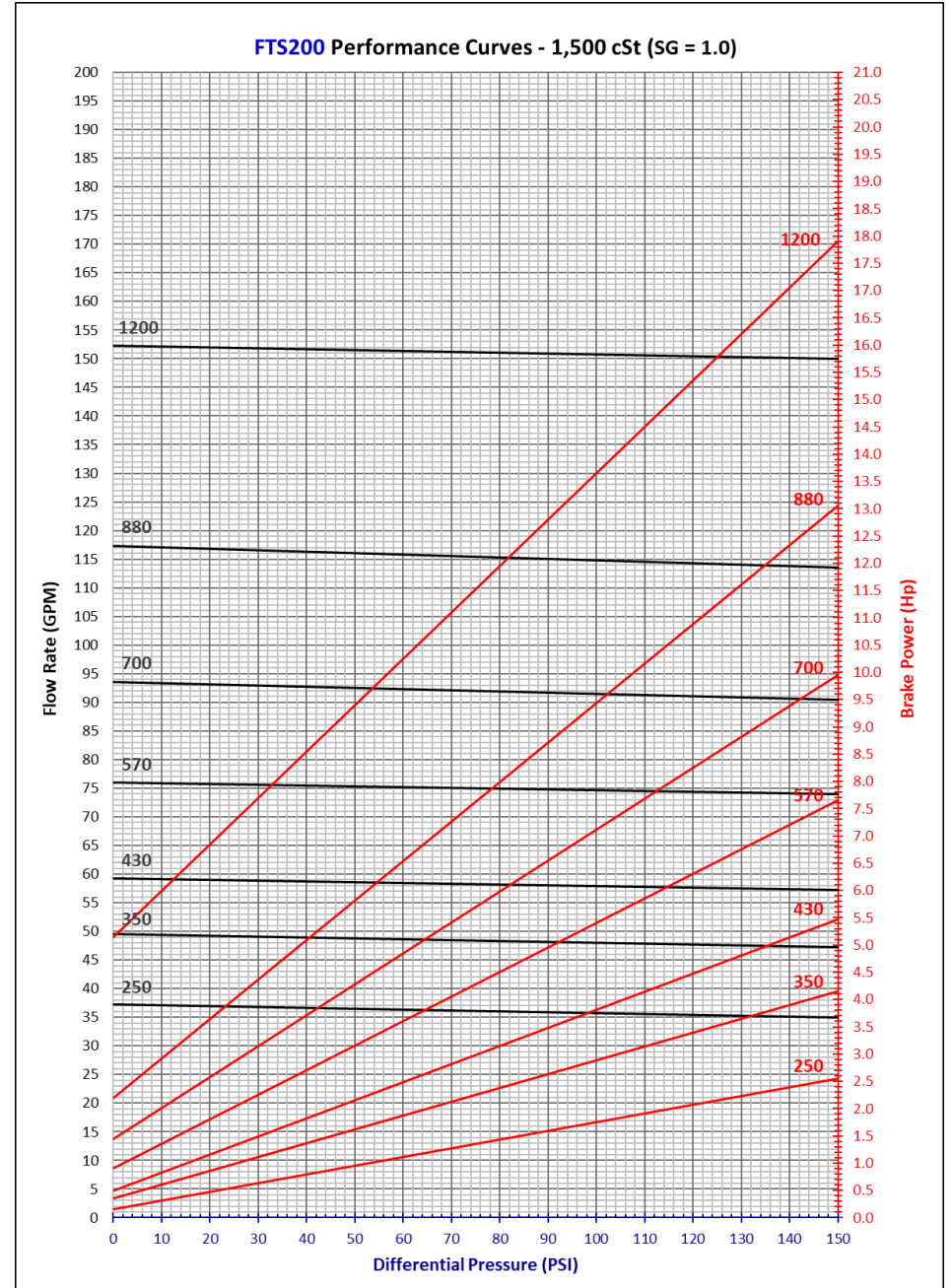
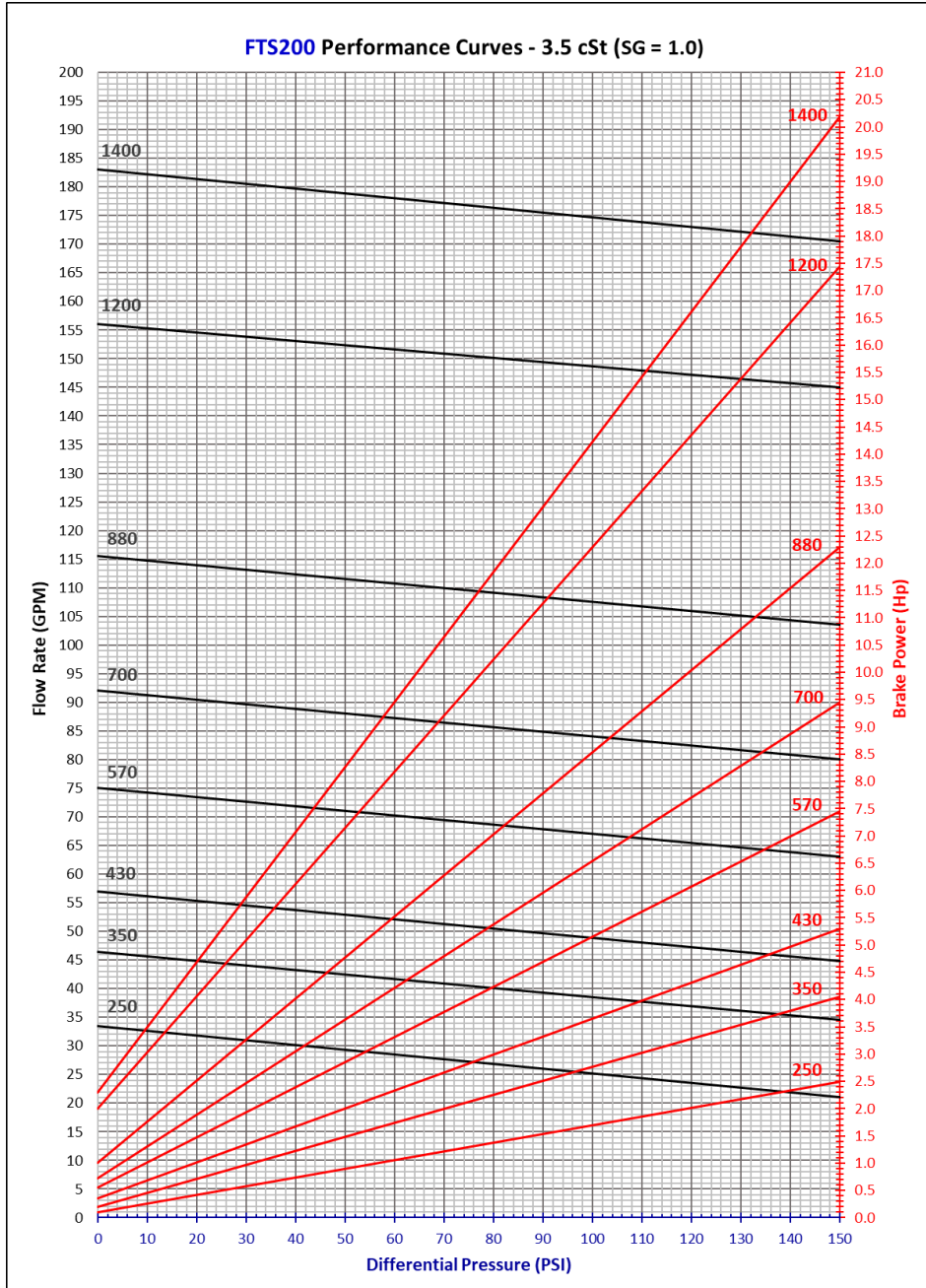
**in. (cm)**

# FTS150 Performance: Flow, Pressure, RPM, BHP





# FTS200 Performance: Flow, Pressure, RPM, BHP



# FTS150/200: Vacuum, Dry Lift and NPSHr

